

PORTABLE THERMAL IMAGING CAMERA

Model - TE / TE-P



TE series is a special low cost real - time IR camera in 160 x 120 resolution. It combines the traits of economical practical and portable. The camera symbolizes easy - to - use, standard and professional, developing for those applications that need instant infrared trouble shooting in power plant, petrochemicals, scientific research, fire fighting, and building inspection, metallurgy, etc.

GENERAL SPECIFICATIONS :

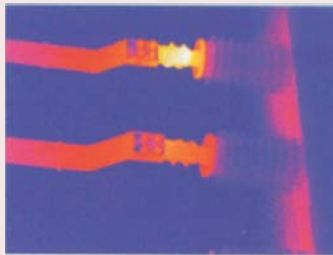
Functions	TE	TE-P
Detector characteristics :		
Detector type	Uncooled FPA microbolometer	
Array size / format	160 X 120	
Image characteristics		
Field of view / min focus distance	18° x 13° / 0.3m	
Spatial resolution (IFOV)	1.9 mrad	
Thermal sensitivity	0.1°C@30°C	
Frame rate	60 Hz	50/60 Hz
Focus	Manual	
Electronic zoom	N / A	2X
Spectral range	8 - 14 m	
Image display		
LCD	Built-in-high resolution Color 2.5" LCD	
Measurement		
Temperature ranges	-20°C ~ +350°C	-20°C ~ +350°C, optional upto +600°C or 1000°C
Accuracy	± 2°C or ± 2% of reading, whichever is greater	
Measurement correction	Automatic / manual	
Measurement mode	Movable spot. Movable area (maximum, minimum and average temperatures). Isotherm. Alarm (voice, color)	Upto 4 Movable spot. Up to 3 Movable area (maximum, minimum and average temperatures). Line profile. Isotherm. Temperature difference. Alarm (voice, color)
Color palette	3 palettes changeable	11 palettes changeable
Image Adjustment	Auto / manual gain and brightness	
Setup functions	Date / time, temperature unit, language	
Emissivity correction	Variable from 0.01 to 1.0	
Ambient temperature correction	Automatic correction according to user input	
Atmospheric transmission correction	N / A	Automatic correction according to user input object distance, relative humidity, ambient temperature.
Image storage		
Storage Memory	Built - in flash memory, Up to 1000 images	Built - in flash memory, Up to 2000 images
Storage mode	Manual single image saving	Automatic / manual single image saving
File format - thermal	JPEG, 14 bit thermal image with measurement data	
Voice annotation	N / A	Input via built-in microphone upto 40 seconds of digital voice per image stored with image
Laser pointer		
Laser pointer	Class 2, 1mw / 635nm(red)	
Power supply		
Battery type	Li-Ion, rechargeable	
Battery operating time	Approx. 3 hours continuous operation	
Charging system	Intelligent charger or power supply adaptor (optional) online charge	
Power saving	YES	
External power	N / A	10 - 15 V DC
Environment		
Operating temperature	-15°C ~ +50°C	
Humidity	90% non-condensing	
Encapsulation	IP 54	
Interface		
External DC input	N / A	YES
Audio output	N / A	YES
Video output	N / A	PAL / NTSC
USB	Image, measurement data transfer to PC	Image, measurement Audio data transfer to PC
Dimensions	250mm x 100mm x 72mm	
Weight	Approx.0.6Kg	

ACCESSORIES :



APPLICATIONS :

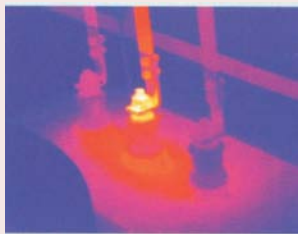
ELECTRICAL FAULTY PREDICTION



Insulating check



Axis Connection Overheat

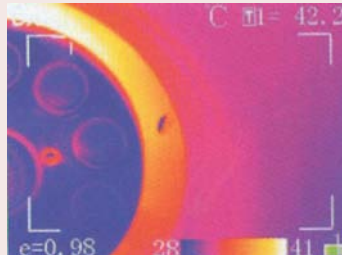


Overheat Connector

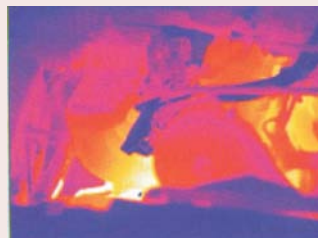


Transformer connector Abnormity

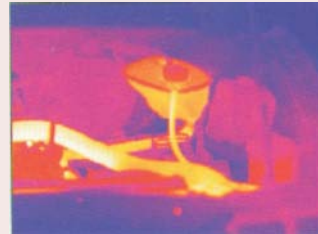
CAR MANUFACTURE INDUSTRY



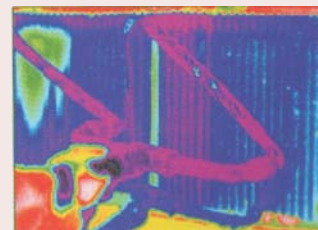
Tyre Performance Analyse



Front Part of A Car

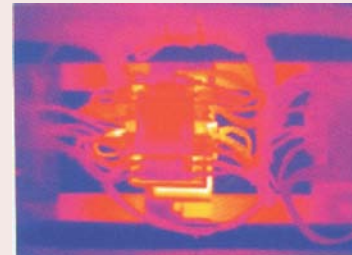


Steam Engine



Car Air Condition Condense

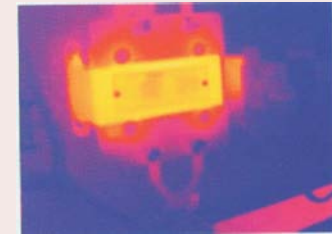
TRAIN EXAMINATION



Relay



Wheel



Transformer

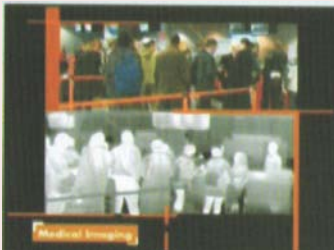


Air Compressor

AIRPORT QUARANTINE



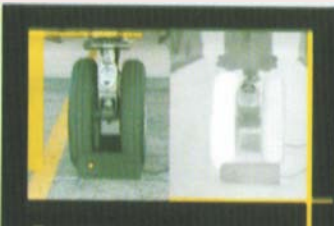
Airport Control



Public surveillance



Airport Customer Body Temperature Check

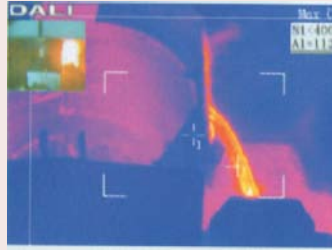


Check Before Take Off

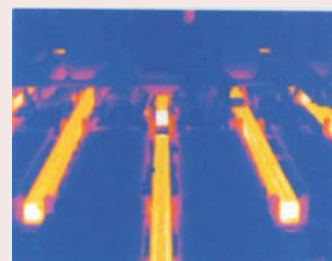
STEAL SMELT



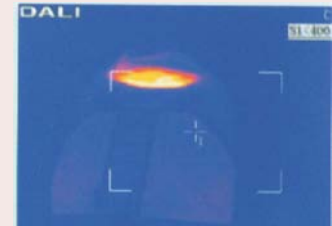
Molten steel



Molten Steeltest



Steel billet test



Fish Torpedo Ket

OTHER FIELDS



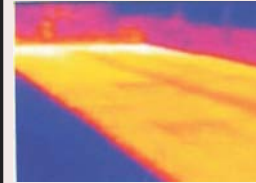
Road watching

Safe Driving



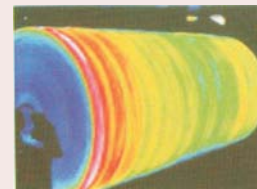
Border surveillance

Maintaince



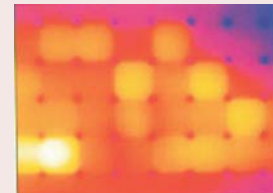
Smooth Road Surface

Long distance surveillance



Paper Making

Biomedicine



Seaside Human